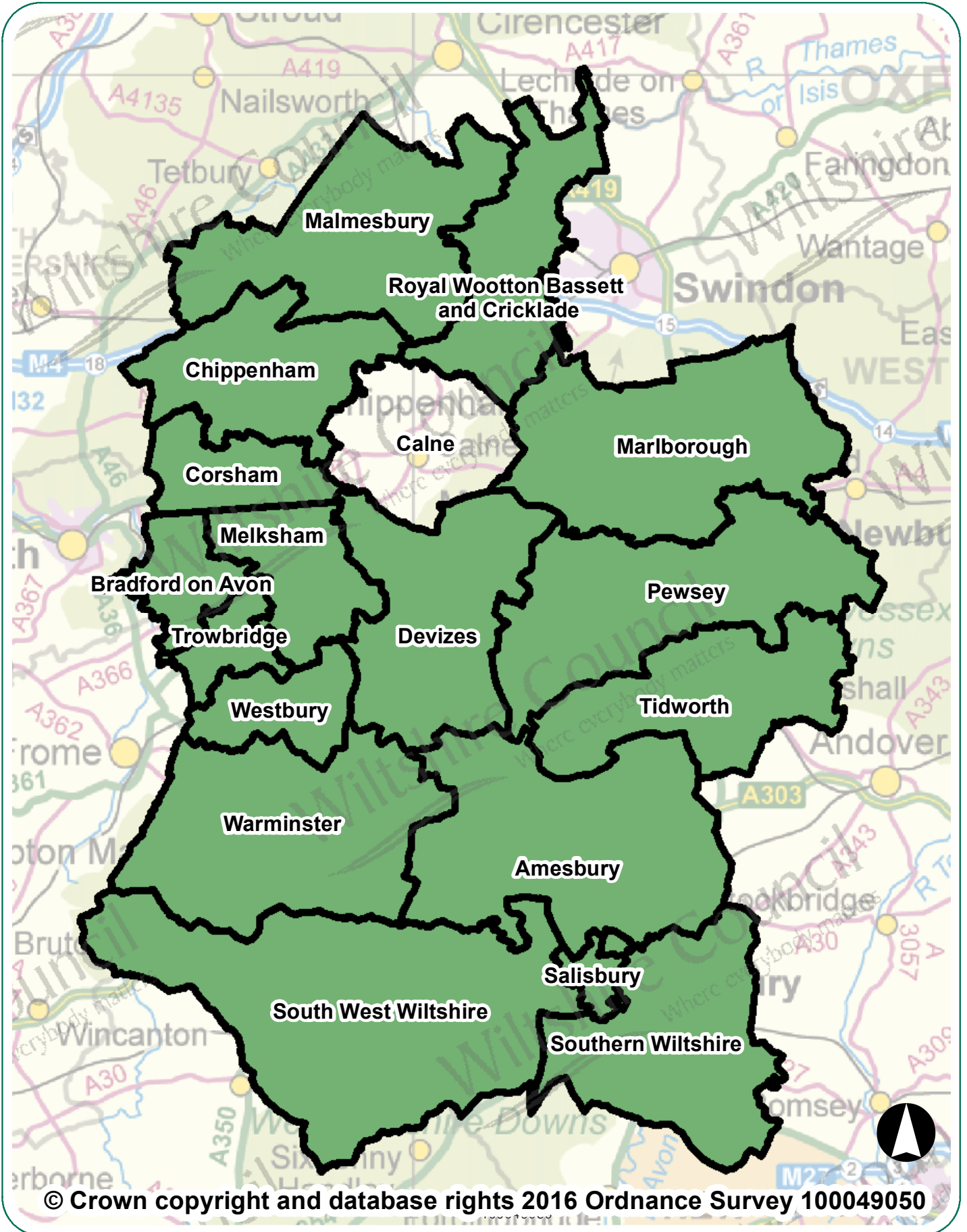


# Calne Area Board Highway Information



# Calne Area Board Highway Information

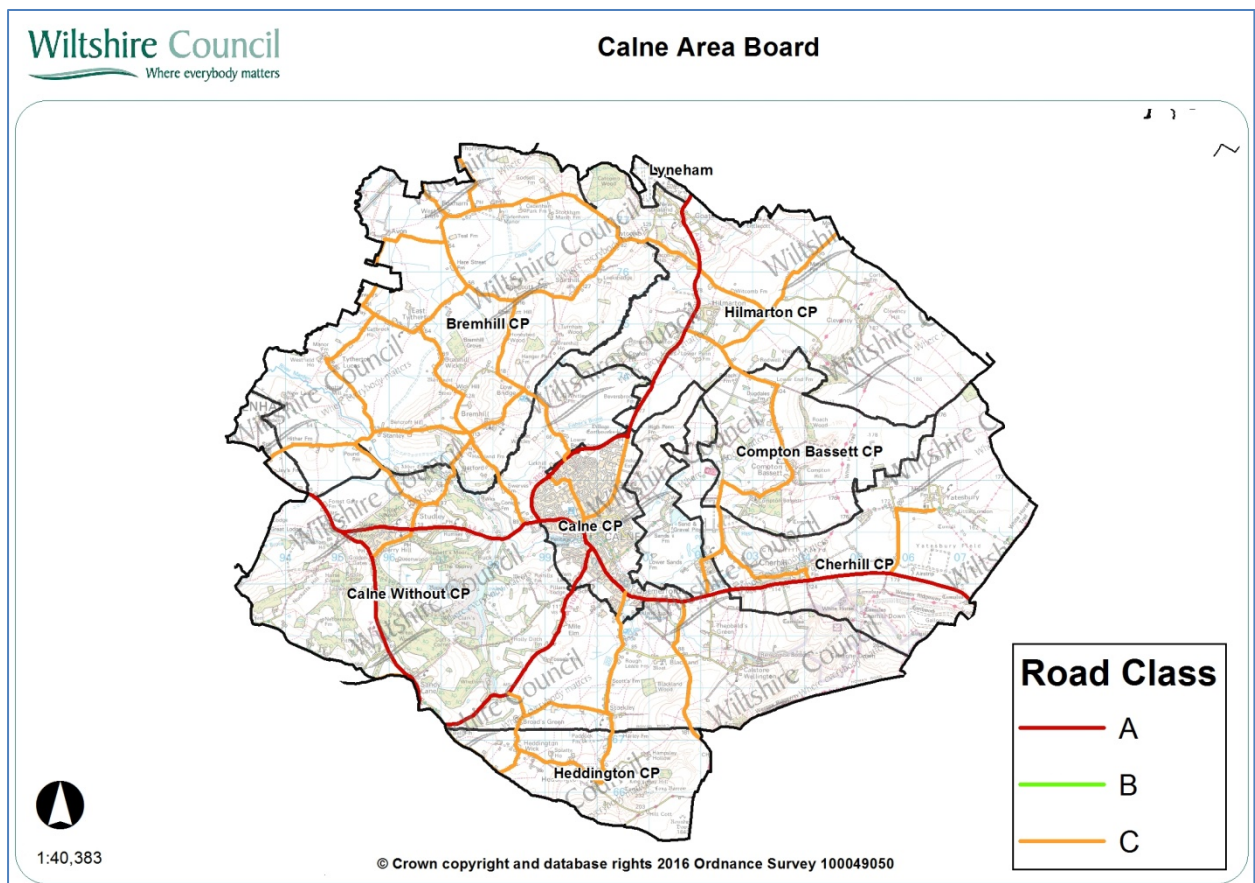
## Introduction

This document summarises highway information for your area board. It lists the recent highway and related work carried out by Wiltshire Council, including the road resurfacing carried out during the first two years of the 'Local Highways Investment Fund 2014 – 2020', and includes other information which should be of interest.

Further information on the Council's activities is available at the website [www.wiltshire.gov.uk](http://www.wiltshire.gov.uk). If you wish to report a specific highway issue please use My Wiltshire. Details are provided at the end of this document.

## Parishes in the community area are:

Bremhill, Heddington, Calne Without, Cherhill, Compton Bassett, Calne, Hilmarton



## Network statistics in your area

### Road length by class

Road type	Urban (km)	Rural (km)
A Class Roads	9	21.61
B Class Roads	0.00	0.00
C Class Roads	16.08	61.09
Unclassified Roads	51.92	29.17
<b>Total</b>	<b>77</b>	<b>111.87</b>
	<b>Overall Total</b>	<b>188.87</b>

The council categorises its roads to reflect their importance. This enables an effective assignment of highway inspection frequencies and maintenance standards.

### Highway assets in your area

The council keeps an inventory of its highway assets in order to assist planning its highway maintenance. Important statistics relating to your board area are:

Asset Type	Measure
Carriageway	188.87km
Footways adjacent to road	104km
Footways (linked)	13.55km
White road centre lines	55km
Road kerbs	138km
Grass verge (maintained)	272 km
Drainage grips	1,045 number
Drainage pipe grips	86 number
Drainage gullies	4,094 number
Road signs	1,310 number
Street lights	2,531 number

## **Major highway maintenance**

### **Road resurfacing**

Wiltshire has over 3,000 miles of road. The Council's 'Local Highways Investment Fund 2014 – 2020' is making a massive investment to improve the condition of the roads in Wiltshire over six years. The programme of work started in April 2014, and is designed and supervised by the Council's consultants Atkins, with the work carried out by our main highway contractors Tarmac and Eurovia.

The work carried out in the first two years of the programme has improved a considerable number of the roads in previously poor condition. The locations of sites treated in recent years are shown below.

### **Carriageway repairs**

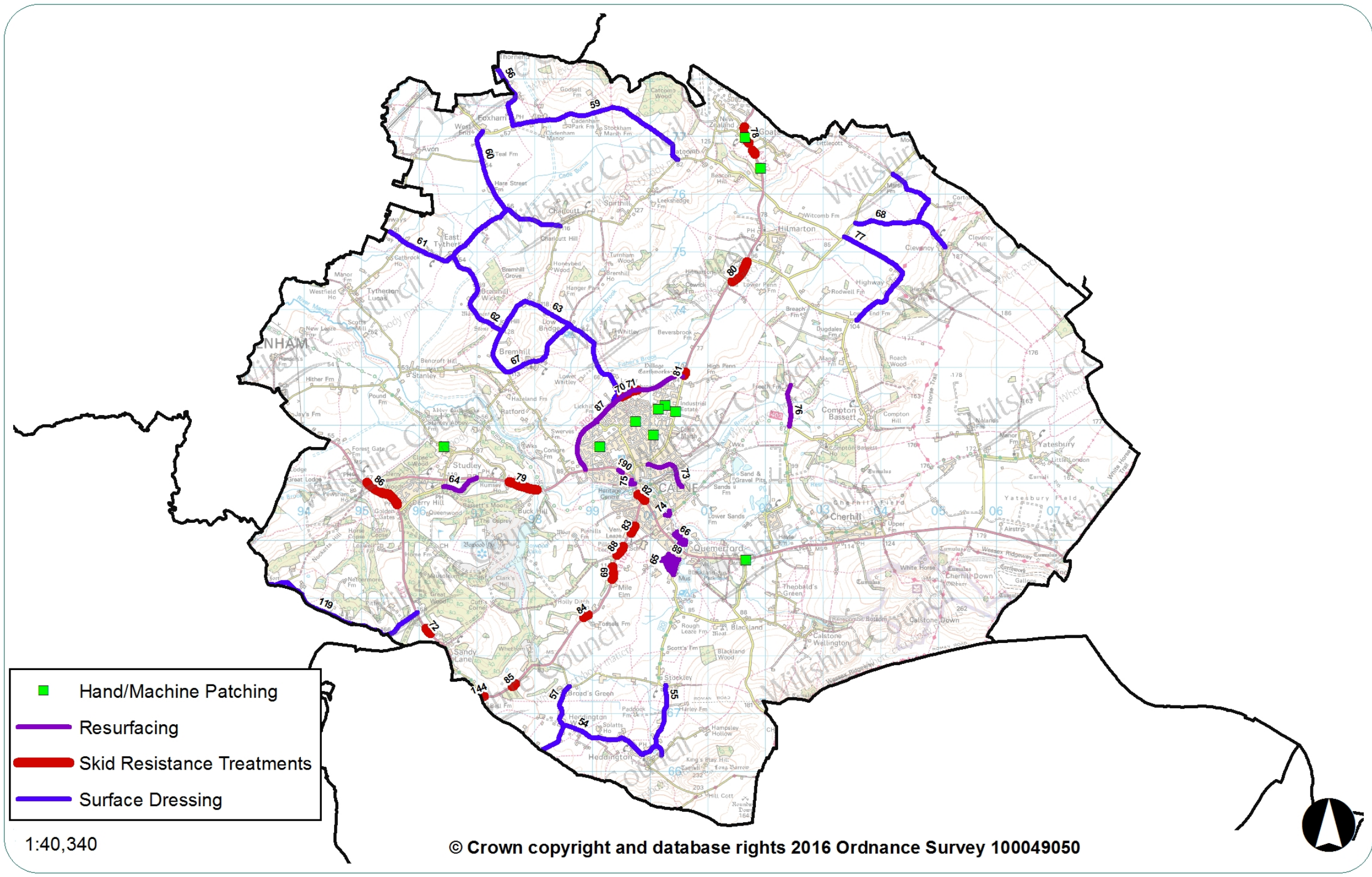
As well as resurfacing roads other works are undertaken to make localised repairs to keep the roads safe. The works undertaken in your area since 2014 are shown on the map below.

The wet winter and flooding in previous years has resulted in substantial damage to the road network. It is important that serious defects are treated promptly to keep the roads safe. The Council currently operates four Pothole teams that respond to urgent issues to keep the roads safe.



Plan showing major maintenance schemes & hand/machine patching sites completed since 2014

**Calne Area Board**



**Major maintenance completed since 2014**

No	Location	Works
54	The Turnpike junction with The Common, south to Heddington to Church Road junction	Surface Dressing
55	Church Road, Heddington into Hampsley Road into Stockley Road to junction with Stockley Hollow	Surface Dressing
56	Unnamed road - Foxham north C132 to B4069	Surface Dressing
119	Mons Lane east to Bewley Lane junction to A342 Devizes Road	Surface Dressing
57	The Common (Heddington Wick to junction with Broads Green)	Surface Dressing
58	Lye Common (junction with Station Road to junction with Thorn end)	Surface Dressing
59	Foxham east C111 to near junction Catcomb	Surface Dressing
60	Hare Street (junction West End to junction Charlcutt)	Surface Dressing
61	Mauds Heath Causeway (junction Mauds Heath Causeway north to Avon to junction with Hare Street)	Surface Dressing
62	Wick Hill (junction Maud Heaths Causeway to Monument Farm)	Surface Dressing
63	Fishers Brook (junction Beversbrook Road to junction Dumb Post Hill)	Surface Dressing
64	Old Road, Studley	Resurfacing
65	The Rise, Fairway, Charlieu Avenue & Bay Close, Calne	Resurfacing
66	Wessington Park, Calne	Resurfacing
67	Top of Bencroft Hill north-east C112 through Bremhill to Low Bridge	Surface Dressing
68	Unnamed road - Corton	Surface Dressing
69	Tossels Farm Entrance to Pillars Lodge Entrance	Skid Resistance Improvements
70	Roundabout 2 To Oxford Road Roundabout Calne Bypass	Skid Resistance Improvements
71	Roundabout 2 To Oxford Road Roundabout Calne Bypass	Skid Resistance Improvements
72	Entrance To Kennels Lodge To unclassified road Nash Hill	Skid Resistance Improvements

Calne Area Board Highway Information

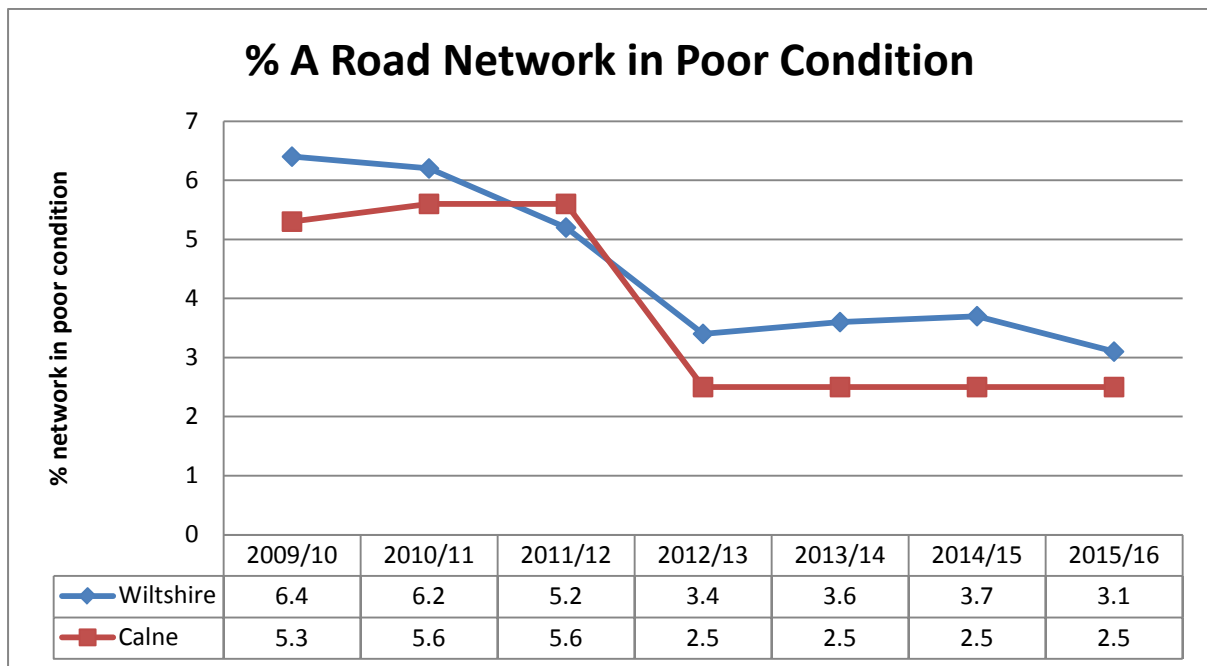
No	Location	Works
73	Abberd Way, Calne	Resurfacing
74	Brewers Lane, Calne	Resurfacing
75	Cox's Hill, Calne	Resurfacing
76	Freeth Lane, Compton Bassett	Resurfacing
77	Highway Common, Compton Bassett	Surface Dressing
78	Widcombe Mill Xrds To Goatacre Lane	Skid Resistance Improvements
79	C136 Church Road To 40mph Calne	Skid Resistance Improvements
80	Compton Bassett To Church Road	Skid Resistance Improvements
81	Greenacres Way Roundabout to entrance of Cowage Farm	Skid Resistance Improvements
82	A3102 Curzon Street Mini-roundabout to A3102 Silver Sreet mini-roundabout	Skid Resistance Improvements
83	Pillars Lodge Entrance to Roundabout at Sports Centre	Skid Resistance Improvements
84	Broads Green To Tossels Farm Entrance To Tossels Farm	Skid Resistance Improvements
85	Back Lane To Broads Green	Skid Resistance Improvements
86	A342 Old Derry Hill	Skid Resistance Improvements
144	A3102/A342 To Back Lane	Skid Resistance Improvements
87	Calne By-Pass	Resurfacing
88	Tossels Farm Entrance To Pillars Lodge Entrance	Skid Resistance Improvements
89	The Rise, Calne	Resurfacing
90	A4 Curzon Street, Calne	Resurfacing

## Highway conditions and technical surveys in your area

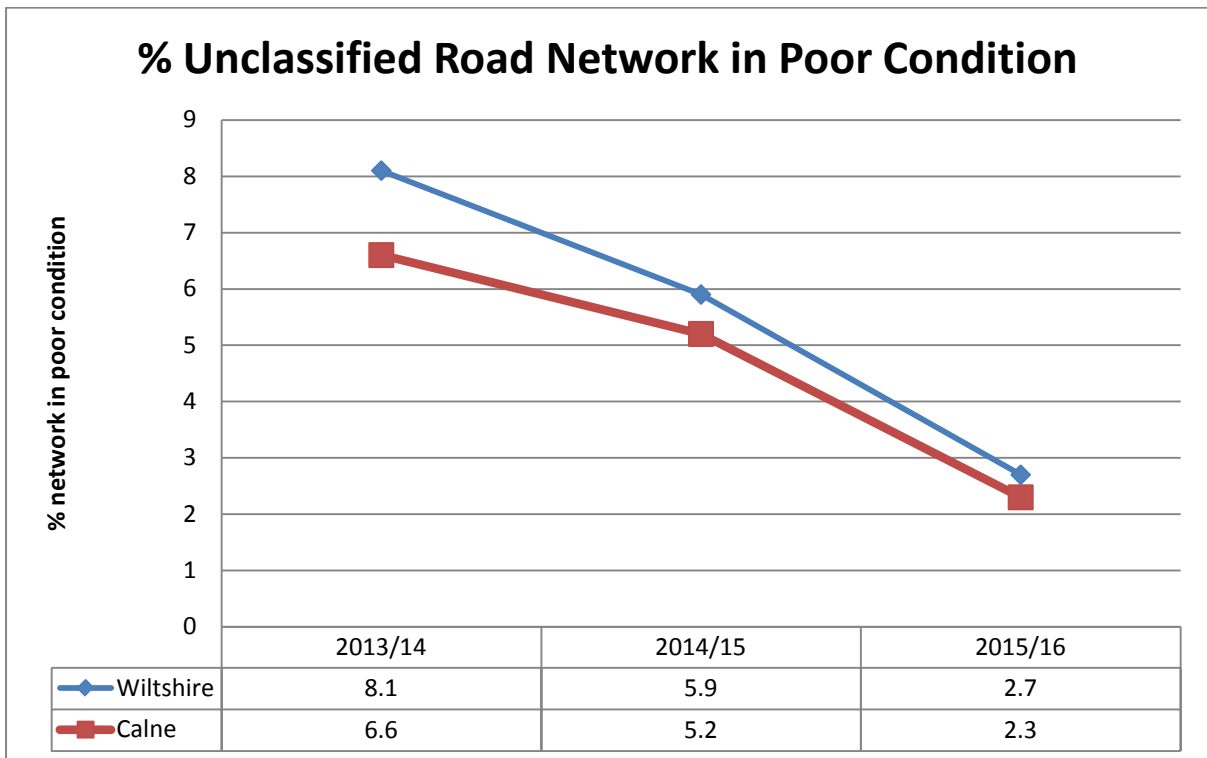
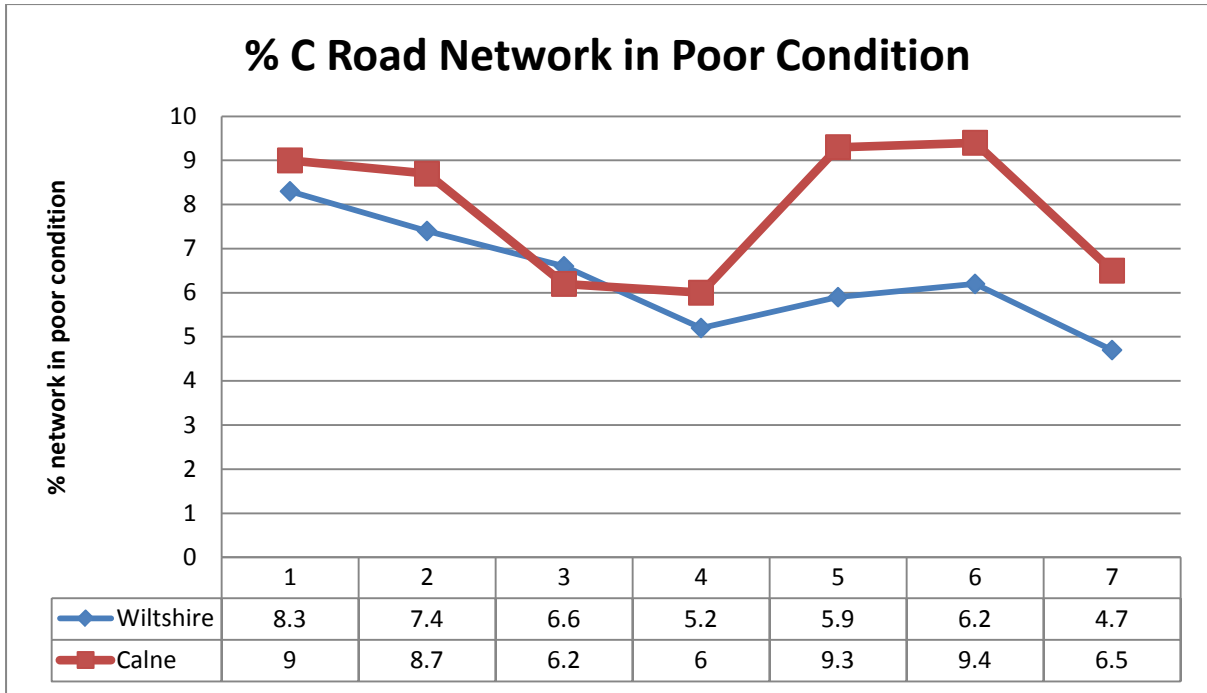
Roads deteriorate in condition because of various factors, including traffic volumes, ground conditions, and weather and drainage issues. Technical surveys of the condition of the highway network are carried out annually and the information is used to help prioritise schemes. Road safety is the priority, and maintaining adequate skid resistance on the busy high speed roads is vital.

The surveys include the use of a vehicle equipped with lasers and cameras to record road surface condition, which allows us to report on road conditions to the Department for Transport and to prioritise maintenance work. Other surveys include measuring skid resistance on the busier roads.

The road conditions in your area are shown below. It should be noted that low numbers are good because it indicates that less road length should be considered for treatment. More detailed information is shown in Appendix A.







## **Integrated transport, bridge and drainage works**

### **Integrated transport**

The Council's traffic engineering team work with our contractors to plan and deliver a range of projects to the local community, most notably through the Area Boards and Community Area Transport Groups (CATGs). The schemes range in size and complexity from simple sign installation through to more complex road safety and improvement schemes.

### **Bridges**

The Council regularly inspects its bridges and other highway structures. There is a programme of renewal and refurbishment works to keep them in good condition, as well as having to respond to damage caused by collisions.

### **Drainage**

Programmes of drainage investigations, repairs and flood alleviation schemes are undertaken throughout the year, but the flooding in recent years has meant that there has been a need to respond immediately to flooding issues, as well as dealing with previously identified problem sites. The drainage improvement and flood alleviation work is co-ordinated through the Council's Operational Flood Working Groups that include the Environment Agency, Wessex Water, other organisations and stakeholders.

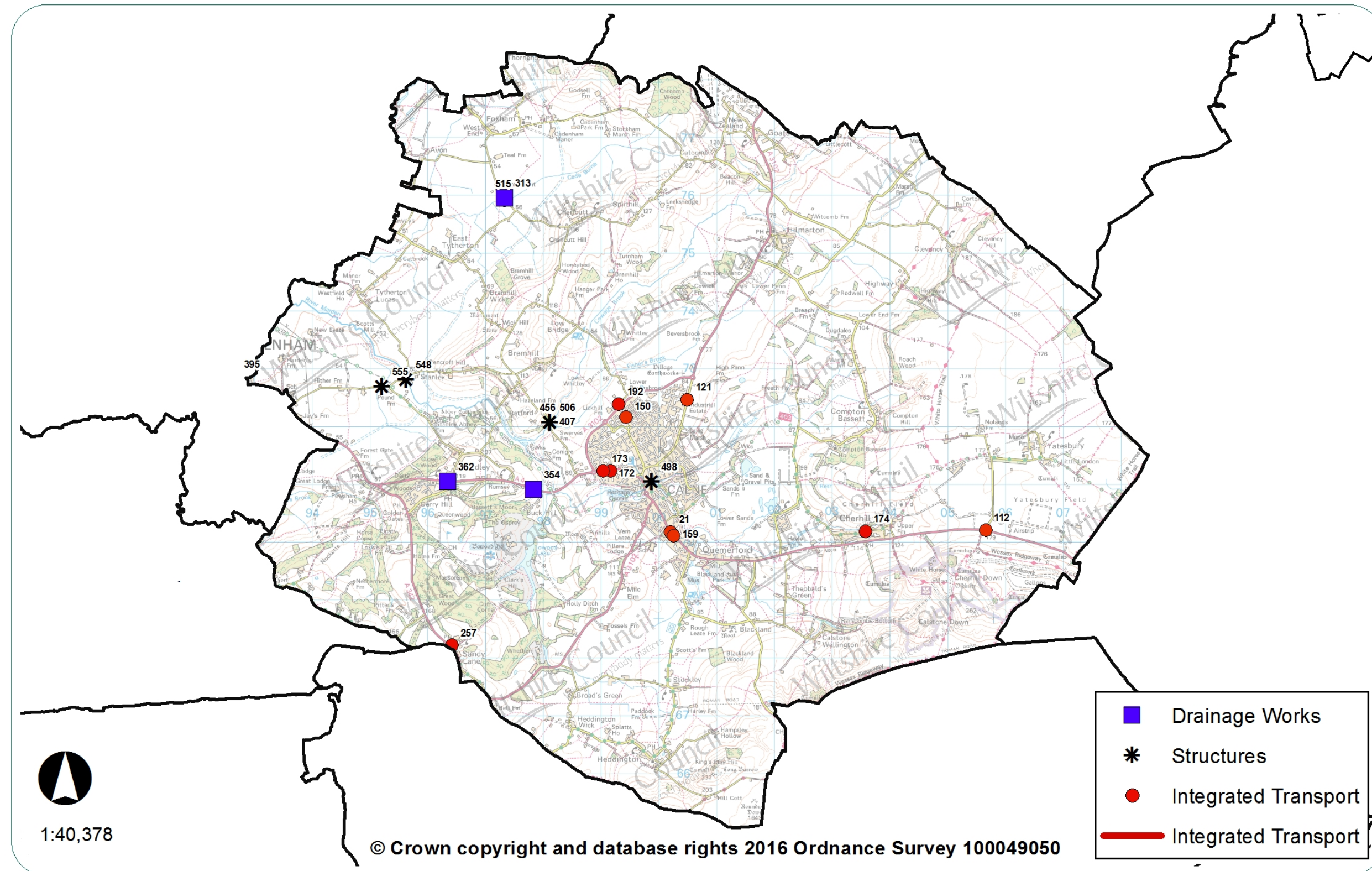
### **Recent work in your area**

The Integrated Transport, Bridge and Drainage schemes carried out in your area since 2015 are listed below.

Plan showing completed integrated transport, bridge and drainage schemes since 2015



Calne Area Board



**Integrated transport schemes since 2015**

No	Location	Description
21	Bentley Lane/A4, Calne	Calne Bentley Lane / A4 junction footway widening
112	Yatesbury	A4 Yatesbury Junction Review - signs and road markings / studs
121	Calne	HGV testing station signs - removal and erect new
150	A3102 Calne	Direction signs to Beversbrook Medical Centre
159	Bentley Lane, Calne	Signs & bollards
172	Calne	Springfield Pedestrian crossing
173	Calne	Springfield bus shelter
174	Cherhill	Village 20mph speed limit
192	Devonshire Place to Tower Road	Shared use path
257	A342 Sandy Lane	A342 Sandy Lane warning signs

**Drainage works since 2015**

No	Location	Description
313	Calne	Culvert reconstruction
354	Calne	Replacement of limed up carrier pipe
362	Calne	Replacement of soakaway

**Bridge works since 2014**

No	Location	Description
548	Bremhill	Road Traffic Collision Masonry Repairs
555	Bremhill	Masonry repairs
407	Bremhill	Ratford Bridge Parapet Repair
456	Bremhill	Rattle Bridge Ratford, Repair Parapet following Road Traffic Collision
498	Calne	Bacon Harris Footbridge, repairs to railings
506	Bremhill	Rattle Bridge Repair
515	Bremhill	Hare Street Bridge, Timber Parapet Replacement Works



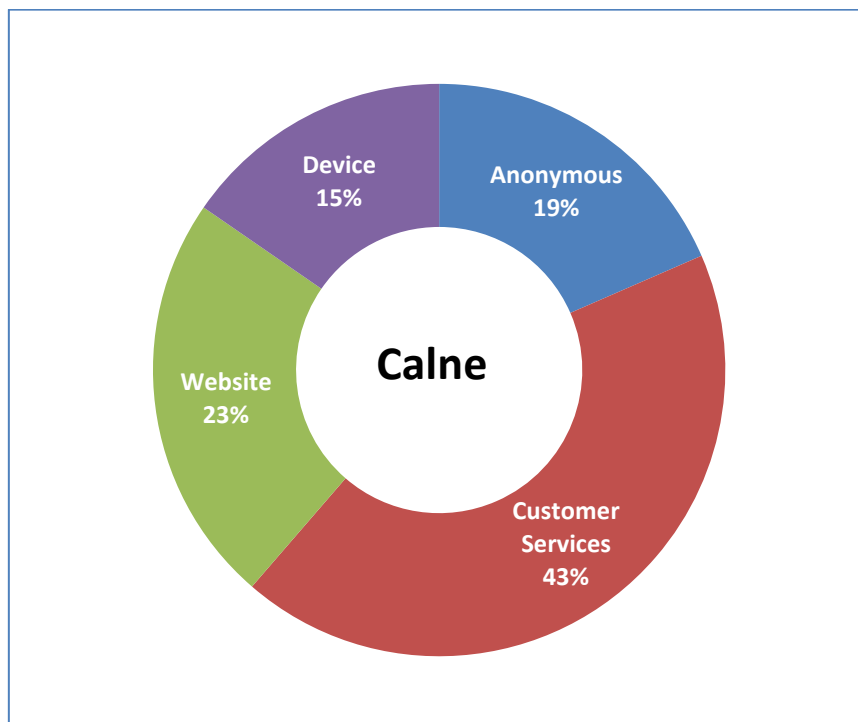
## My Wiltshire



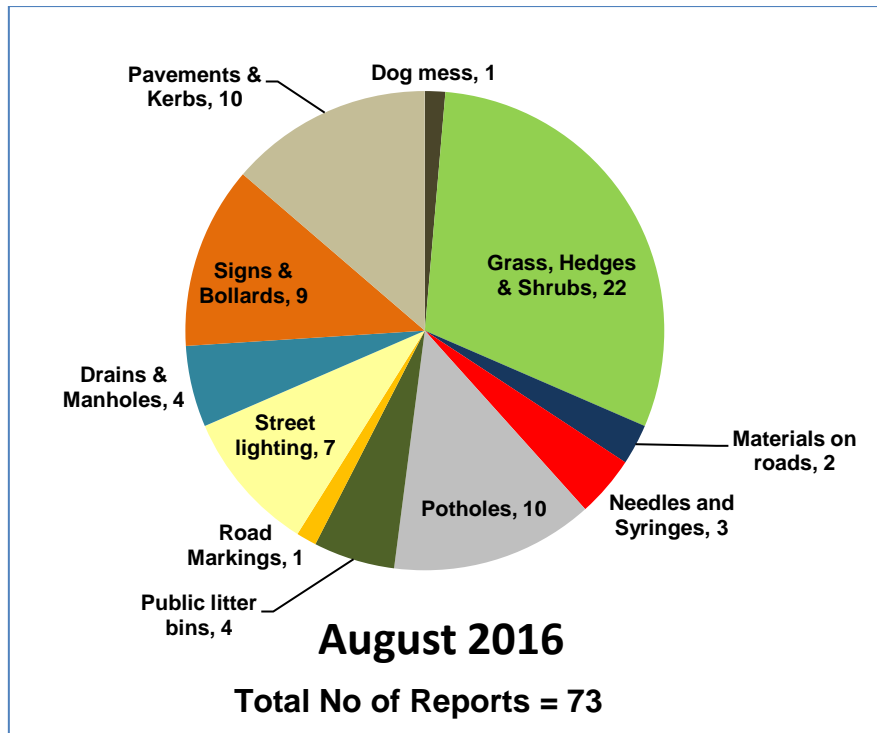
My Wiltshire provides an easy way to report highway issues, including using the Council's website. We have an app so you can report on the go using your smartphone. The My Wiltshire app is available to download at both the [App Store](#) (for iPhones and iPads), from [Google Play](#)<sup>™</sup> (for Android phones) and Windows Store. You can attach information such as photos or videos and pinpoint the location of your report using the mapping software on your phone.

A summary of recent reports in your area is shown below, and further details are shown in Appendix B.

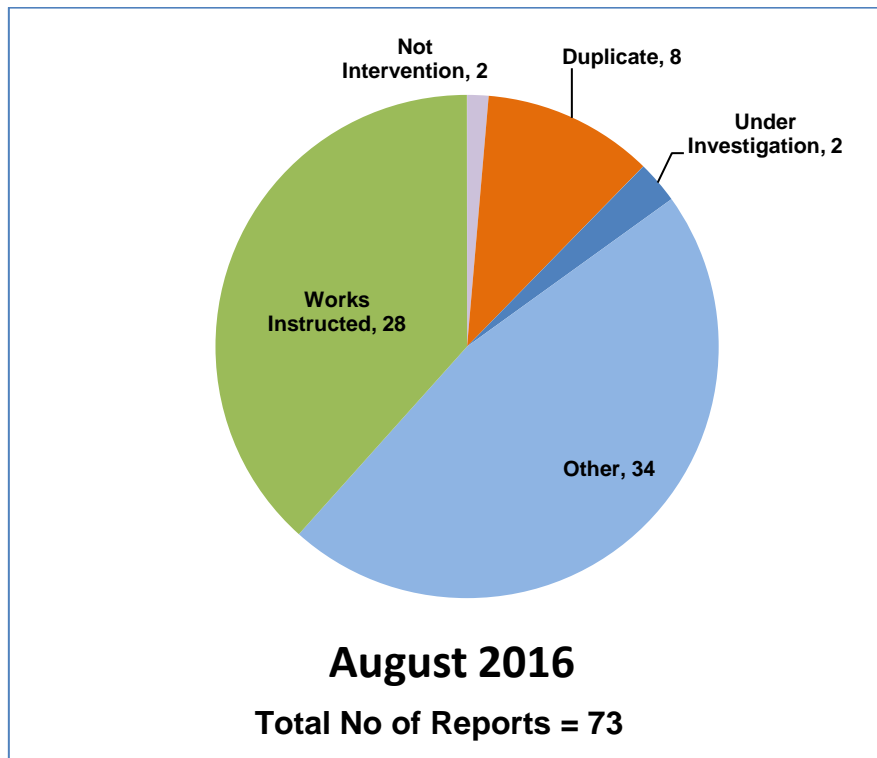
### Customer reporting methods in your area



### Customer reports in your area for the month of August 2016



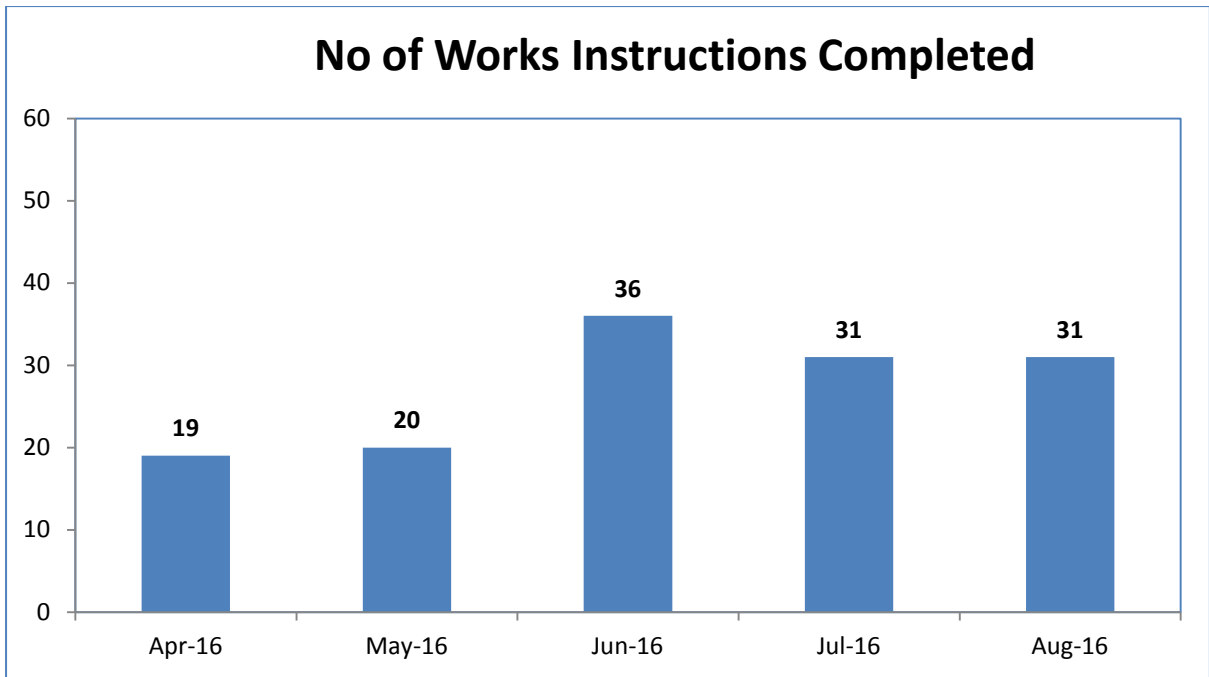
### Actions following recent reports in your area



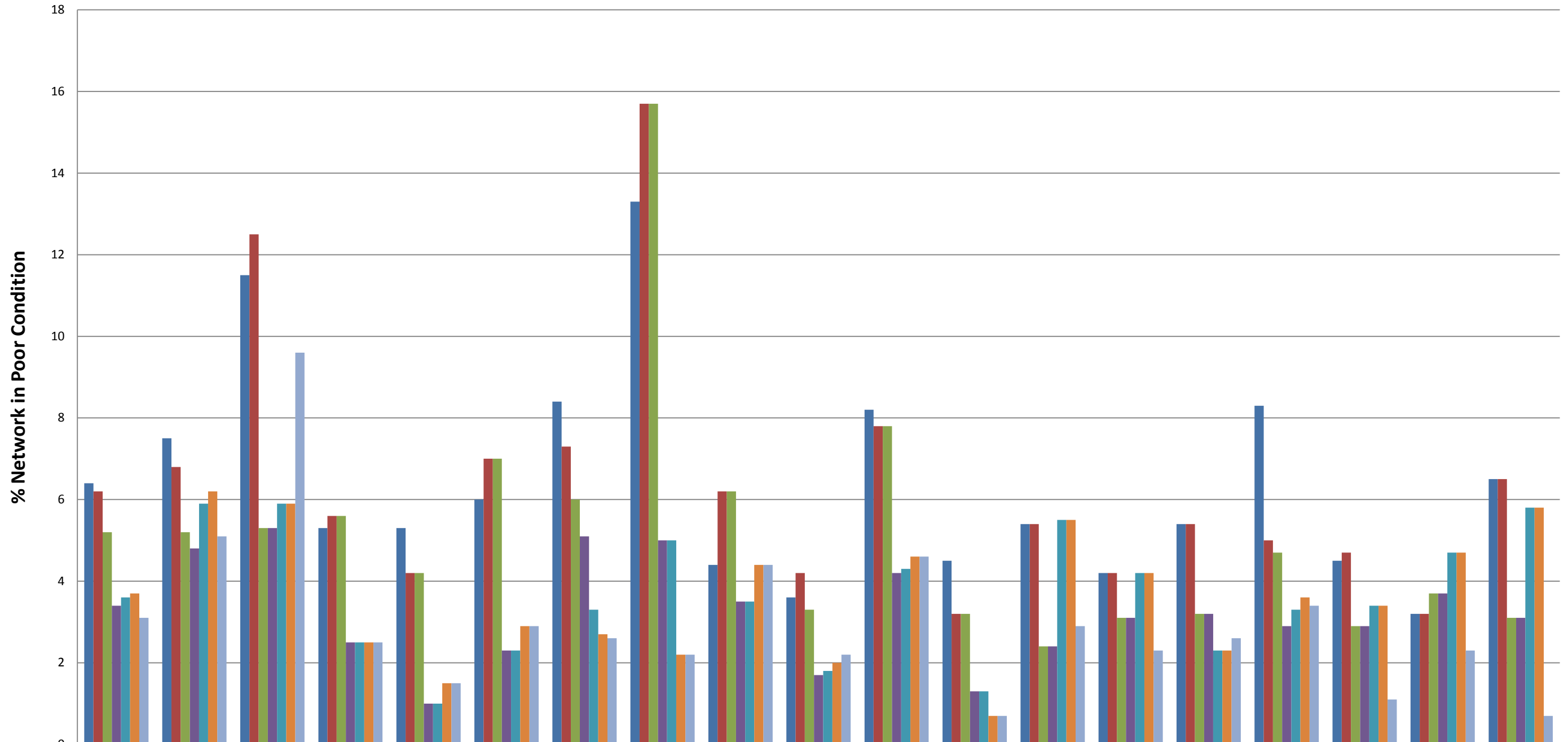
## Action definitions

1. **Not Intervention** – the technician has attended site and classified the defect as not meeting intervention levels as per the Highway Inspection Manual 2013 or in the case of streetscene reports, service level agreements.
2. **Duplicate** – a report has already been received in relation to this issue and a works instruction has previously been passed to the contractor to undertake a repair/carry out the necessary works.
3. **Under Investigation** – this issue is currently with a Highways technician or engineer – they may be awaiting information from the customer or the issue requires further investigation e.g. wet weather inspection, drainage survey, exploratory excavation, ownership query.
4. **Discretionary works** – this issue is not a highway safety issue and has been identified as one which falls within the remit of the parish steward scheme.
5. **Other** – the issue has been identified as one which does not require any action by Local Highways. This could be for a number of reasons –
  - the report has been cancelled by the user,
  - there is insufficient information provided to assess the issue and the customer has not provided contact details,
  - the issue is not the responsibility of Wiltshire Council e.g. un-adopted highway, gas/electricity/telephone/water/cable company, Highways England, housing association,
  - the technician attended site and nothing was found at the stated location
  - the issue has been passed to another service within Wiltshire Council e.g. rights of way, bridges.
6. **Works Instructed** – the technician has assessed the issue as requiring works to be carried out and has either dealt with the issue personally or has referred it to the contractor for repair.

**Highway defects completed in your area in recent months**



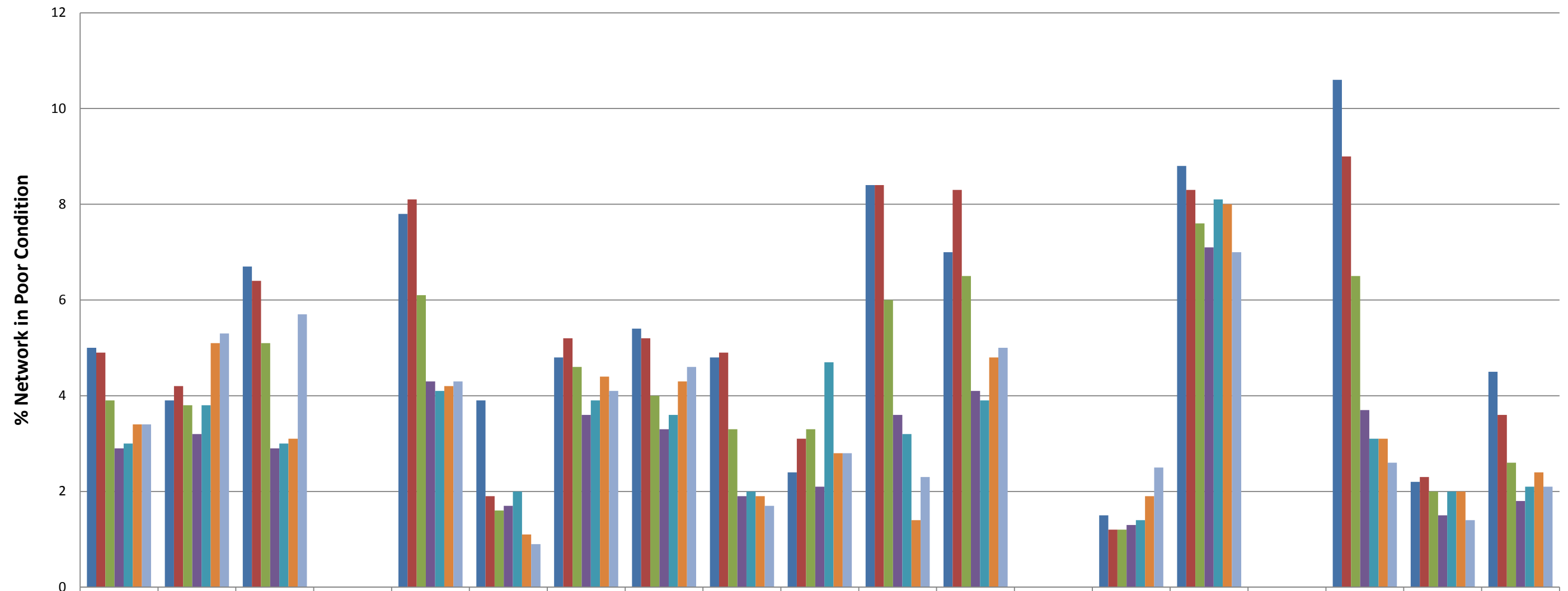
**% A Road Network in Poor Condition**



	Wiltshire	Amesbury	Bradford On Avon	Calne	Chippenham	Corsham	Devizes	Malmesbury	Marlborough	Melksham	Pewsey	Royal Wootton Bassett & Cricklade	Salisbury	South West Wiltshire	Southern Wiltshire	Tidworth	Trowbridge	Warminster	Westbury
■ 2009/10	6.4	7.5	11.5	5.3	5.3	6	8.4	13.3	4.4	3.6	8.2	4.5	5.4	4.2	5.4	8.3	4.5	3.2	6.5
■ 2010/11	6.2	6.8	12.5	5.6	4.2	7	7.3	15.7	6.2	4.2	7.8	3.2	5.4	4.2	5.4	5	4.7	3.2	6.5
■ 2011/12	5.2	5.2	5.3	5.6	4.2	7	6	15.7	6.2	3.3	7.8	3.2	2.4	3.1	3.2	4.7	2.9	3.7	3.1
■ 2012/13	3.4	4.8	5.3	2.5	1	2.3	5.1	5	3.5	1.7	4.2	1.3	2.4	3.1	3.2	2.9	2.9	3.7	3.1
■ 2013/14	3.6	5.9	5.9	2.5	1	2.3	3.3	5	3.5	1.8	4.3	1.3	5.5	4.2	2.3	3.3	3.4	4.7	5.8
■ 2014/15	3.7	6.2	5.9	2.5	1.5	2.9	2.7	2.2	4.4	2	4.6	0.7	5.5	4.2	2.3	3.6	3.4	4.7	5.8
■ 2015/16	3.1	5.1	9.6	2.5	1.5	2.9	2.6	2.2	4.4	2.2	4.6	0.7	2.9	2.3	2.6	3.4	1.1	2.3	0.7

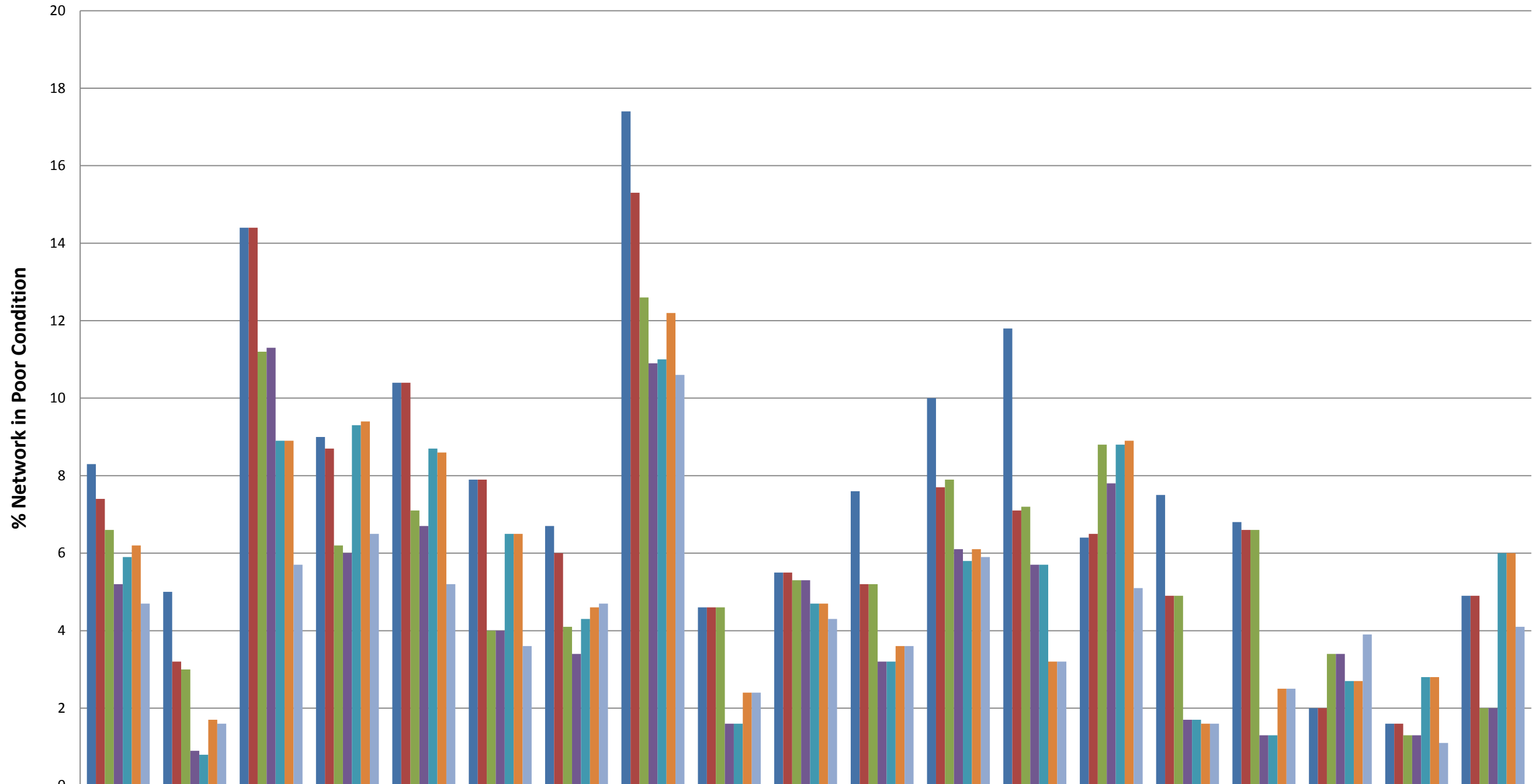


### % B Road Network in Poor Condition



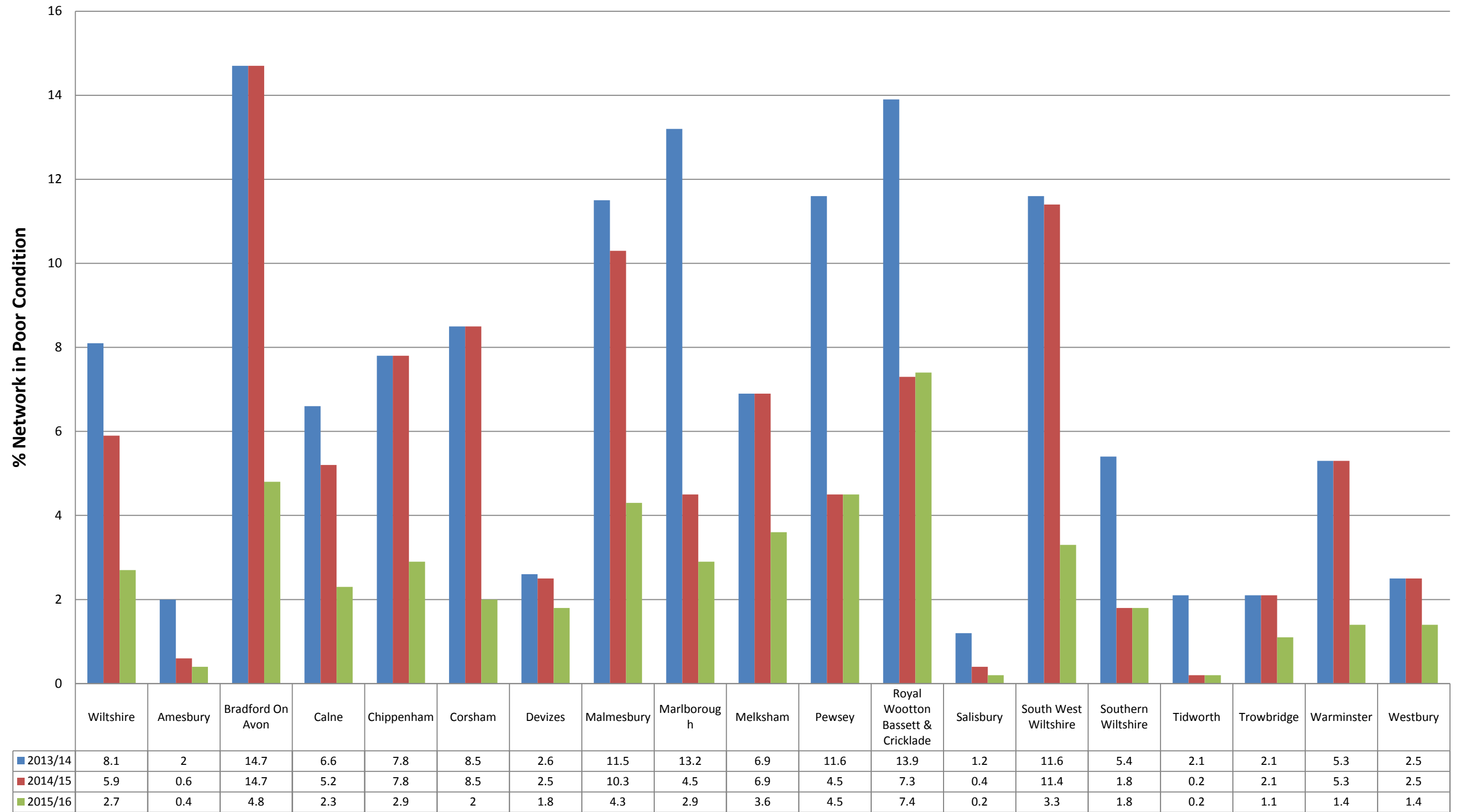
	Wiltshire	Amesbury	Bradford On Avon	Calne	Chippenham	Corsham	Devizes	Malmesbury	Marlborough	Melksham	Pewsey	Royal Wootton Bassett & Cricklade	Salisbury	South West Wiltshire	Southern Wiltshire	Tidworth	Trowbridge	Warminster	Westbury
■ 2009/10	5	3.9	6.7	0	7.8	3.9	4.8	5.4	4.8	2.4	8.4	7	0	1.5	8.8	0	10.6	2.2	4.5
■ 2010/11	4.9	4.2	6.4	0	8.1	1.9	5.2	5.2	4.9	3.1	8.4	8.3	0	1.2	8.3	0	9	2.3	3.6
■ 2011/12	3.9	3.8	5.1	0	6.1	1.6	4.6	4	3.3	3.3	6	6.5	0	1.2	7.6	0	6.5	2	2.6
■ 2012/13	2.9	3.2	2.9	0	4.3	1.7	3.6	3.3	1.9	2.1	3.6	4.1	0	1.3	7.1	0	3.7	1.5	1.8
■ 2013/14	3	3.8	3	0	4.1	2	3.9	3.6	2	4.7	3.2	3.9	0	1.4	8.1	0	3.1	2	2.1
■ 2014/15	3.4	5.1	3.1	0	4.2	1.1	4.4	4.3	1.9	2.8	1.4	4.8	0	1.9	8	0	3.1	2	2.4
■ 2015/16	3.4	5.3	5.7	0	4.3	0.9	4.1	4.6	1.7	2.8	2.3	5	0	2.5	7	0	2.6	1.4	2.1

### % C Road Network in Poor Condition



	Wiltshire	Amesbury	Bradford On Avon	Calne	Chippenham	Corsham	Devizes	Malmesbury	Marlborough	Melksham	Pewsey	Royal Wootton Bassett & Cricklade	Salisbury	South West Wiltshire	Southern Wiltshire	Tidworth	Trowbridge	Warminster	Westbury
2009/10	8.3	5	14.4	9	10.4	7.9	6.7	17.4	4.6	5.5	7.6	10	11.8	6.4	7.5	6.8	2	1.6	4.9
2010/11	7.4	3.2	14.4	8.7	10.4	7.9	6	15.3	4.6	5.5	5.2	7.7	7.1	6.5	4.9	6.6	2	1.6	4.9
2011/12	6.6	3	11.2	6.2	7.1	4	4.1	12.6	4.6	5.3	5.2	7.9	7.2	8.8	4.9	6.6	3.4	1.3	2
2012/13	5.2	0.9	11.3	6	6.7	4	3.4	10.9	1.6	5.3	3.2	6.1	5.7	7.8	1.7	1.3	3.4	1.3	2
2013/14	5.9	0.8	8.9	9.3	8.7	6.5	4.3	11	1.6	4.7	3.2	5.8	5.7	8.8	1.7	1.3	2.7	2.8	6
2014/15	6.2	1.7	8.9	9.4	8.6	6.5	4.6	12.2	2.4	4.7	3.6	6.1	3.2	8.9	1.6	2.5	2.7	2.8	6
2015/16	4.7	1.6	5.7	6.5	5.2	3.6	4.7	10.6	2.4	4.3	3.6	5.9	3.2	5.1	1.6	2.5	3.9	1.1	4.1

### % Unclassified Road Network in Poor Condition



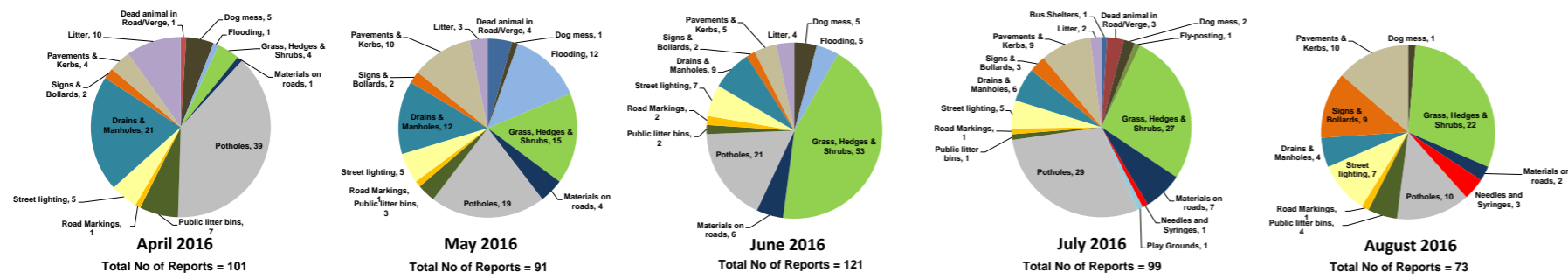
# Appendix B: My Wiltshire Statistics



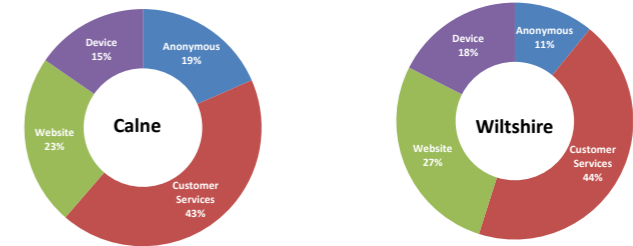
## Calne Area Board



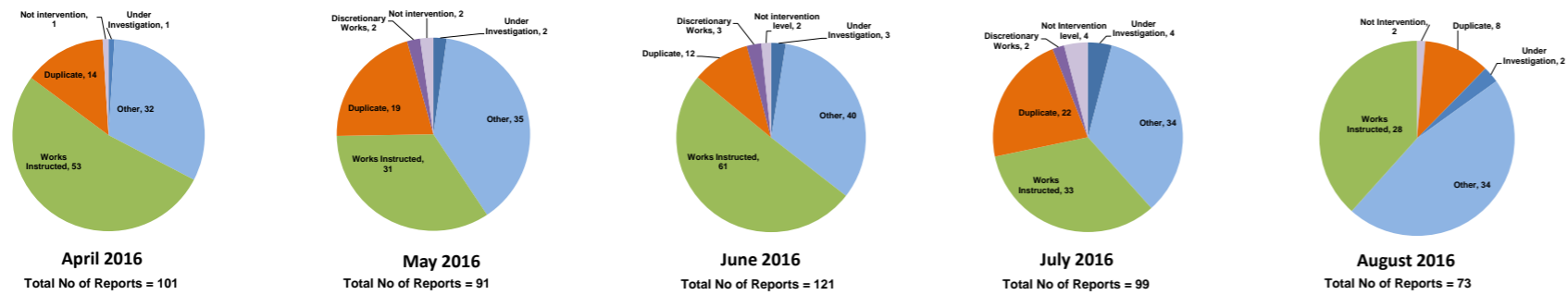
### Customer Reported Issues



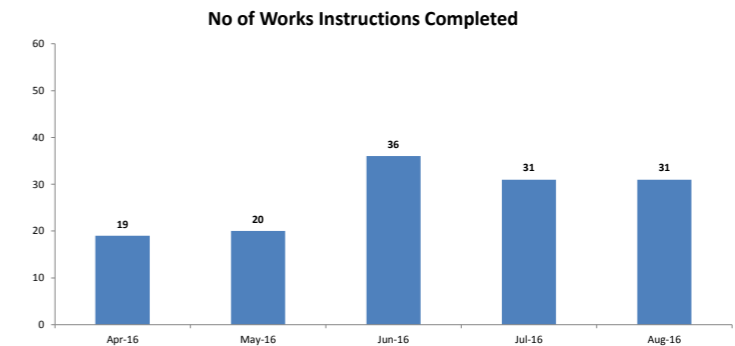
### Reporting Channels



### Customer Call Outcomes



### Completed in Month



### Safety Inspections

